

correa

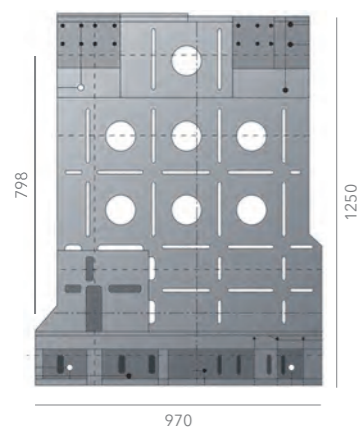
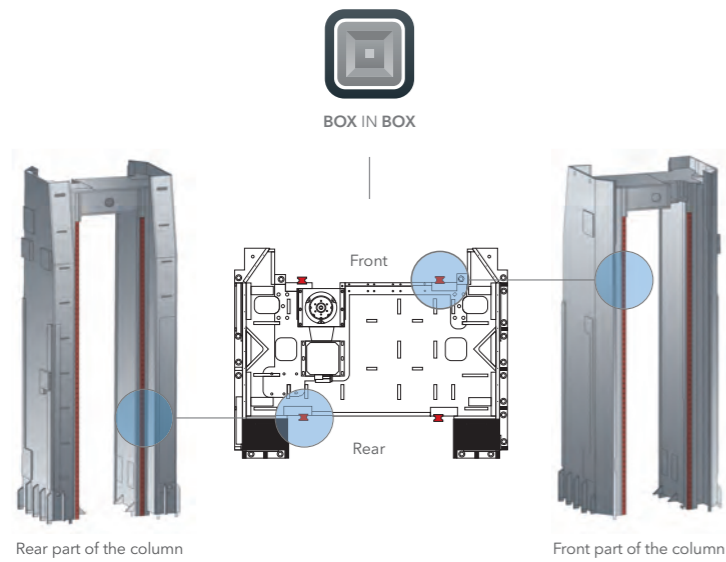
AXIA

Travelling column milling machine

WARRANTY

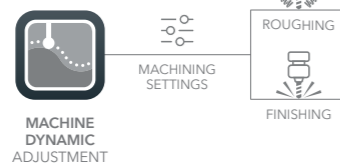


The **AXIA** represents a pure *box-in-box* concept, combining an innovative ram droop mechanical system with a unique ram guiding system.



Dynamic performance parametrizable in accordance with:

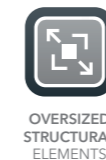
- ROUGHING OPERATION
- FINISHING OPERATION



30-40 m/min in X, Y and Z axes, thanks to its V-Shaped linear guide-ways in all axes



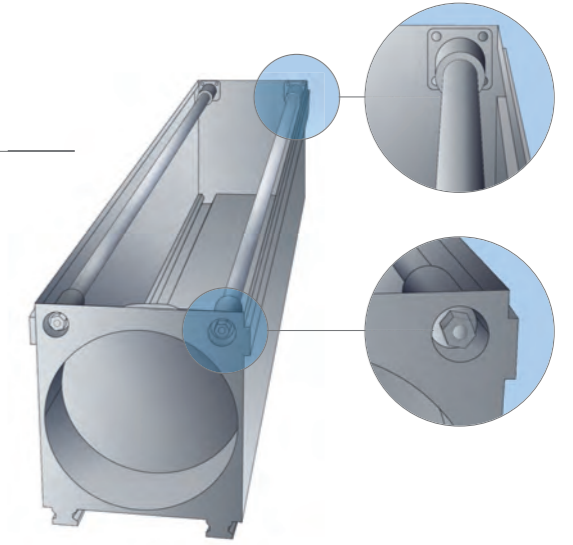
Stand-by function and Auto Switch off function, saving 20% of the total energy machine consumption



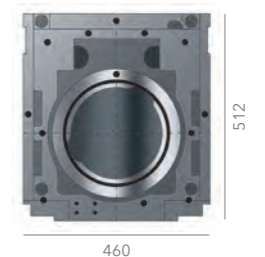
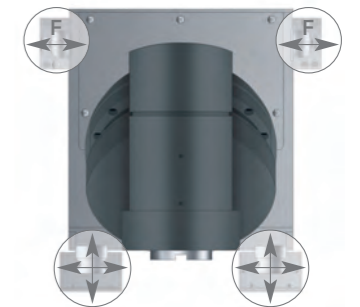
- The biggest cross sections in the market.
- Roughing capacity + Machine geometry stability.



Pulling bars for fine tuning adjustment of ram droop effect



Unique ram guiding system combining accuracy and dampening capacity



AXIA

Travelling column milling machine



Milling Head



UAD 0.02° x 0.02°

Universal Auto-Indexing
Differential Head
30 kW | 1050 Nm | 6000 rpm
52 kW | 1375 Nm | 6000 rpm



OAD 0.02° x 0.02°

Orthogonal Auto-Indexing
Differential Head
30 kW | 1050 Nm | 6000 rpm
52 kW | 1375 Nm | 6000 rpm

UDX 0.02° x 0.02°



Universal Auto-Indexing Head
30 kW | 620 Nm | 10000 rpm



FC-30 | 60 | 80

Front Spindle
15 • 30 kW | 1050 Nm | 3000 • 4000 rpm
15 • 52 kW | 1375 Nm | 3000 • 4000 rpm



FCT

High Torque Front Spindle
52 kW | 2005 Nm | 4000 rpm



FD-30 | 60 | 80

Non-centered front spindle
15 • 30 kW | 1050 Nm | 3000 • 4000 rpm
15 • 52 kW | 1375 Nm | 3000 • 4000 rpm



UT-500 | 630

D'Andrea Head
30 kW | 6300 Nm | 315, 250 rpm
52 kW | 8000 Nm | 315, 250 rpm

AL-600 2.5°



Reach-out Angle Milling Head
25 kW | 800 Nm | 1500 rpm



ESE Continuous

2-Axis continuous Milling Head
35 • 60 kW | 12000 • 24000 rpm



TU 2.5°

Turning and shaping Head

Milling Head Changer



Standard Equipment

- Automatic Universal Head • Vixion 4.0
- Numerical control Heidenhain or Siemens [operate HMI] • Hydraulic and cooling group
- Portable handwheel • Linear scales in all axes
- Air-conditioned electrical cabinet • External Coolant with adjustable nozzles in the head
- Linear guides in the X, Y and Z axes • Internal and external air flow
- Lamp in the working area • Guarding
- Tele-service

Optional Equipment

- Other heads • Self cleaning filter
- Automatic head-changer • Air/Coolant cleaning gun
- Pick up station for 6, 8 and 12 tools • Chip conveyors
- Automatic charger for 30, 40, 60 and 120 tools • Perimeter fence
- Probes of measurement, tools and parts • Different enclosures according to user's needs [only in some models]
- Rotary tables • Coolant through spindle 17, 36, 70 bar
- Floor plates • Turning tables

correa

www.nicolascorrea.com

Nicolás Correa, S.A.

Alcalde Martín Cobos, 16-A
09007 Burgos • Spain

Phone: +34 947 288 100

Fax: +34 947 288 117

correa@correa.es

